

Upper St. Croix Parish United Methodist Church
Grantsburg, St. Croix Falls, Atlas
P.O. Box 128
Grantsburg, WI 54840



*Tomorrow's Forecast...God
Reigns & The Sun Shines!*

Inside this issue:

Stewardship Message	2
Letter from Pastor Jenny	3
Central News	5
Atlas News	7
St. Croix Falls News	9
Message from Bishop Jung	10
Church Happenings in Photos	11
Activity Fun Page	13
Miscellaneous	14
Worship Schedule	15
Invitation to New Small Groups	16
Polk County Food Shelf Info.	17
Burnette County Food Shelf Info	18

A STEWARDSHIP MESSAGE

God is NOT on Vacation ~ August 2021

Matthew 6:34~ "Therefore do not be anxious about tomorrow, for tomorrow will be anxious for itself. Sufficient for the day is its own trouble."



The pace of August is often hectic and life (yours, your children's, your family's) takes you in many directions. But let us remember, God does not take a summer vacation! God is always here for us, so should not we make time for God this summer?

The church is not closed during the summer, we are still open! We still worship on Sundays! The pastor continues to preach sermons and the secretary still writes and prints the bulletin. The pianists prepare and practice each week to lead music in worship. The ushers and greeters show up each Sunday and the communion stewards set up communion. The church is open for worship!

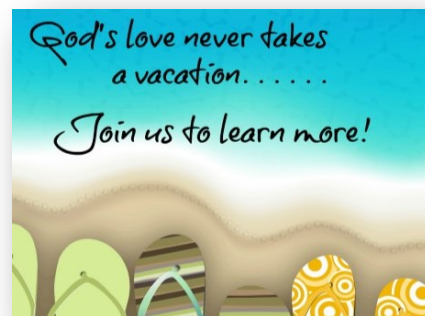
So, I invite you to make church part of your summer plans. When you are in town, I invite you to come to worship. (Though sleeping in may sound fun, remember, God doesn't sleep in.) When you are out of town, I encourage you to find a church wherever you may be. If you cannot find a church, try to worship as a family. Sing hymns, read scriptures, and ask one another where they see God present.

Church is an important part of Christian discipleship. It is good for you to be with other Christians and with God. It is good for you to give of your time, talents, and treasures. It is good for you to recharge and recenter.

It may be nice outside, but don't forget you also need Son-shine!

What are your summer plans? School may be out, but church is not. Summer is here. Enjoy the Son-shine!

Rev. Krystal Goodger, Wisconsin United Methodist



Visit the Wisconsin United Methodist Foundation at
www.wumf.org or [Facebook/wumf.org](https://www.facebook.com/wumf.org)
Or call 1-888-903-9863

UNITED METHODIST MESSENGER

THE UPPER ST. CROIX PARISH

715-463-2624 Parish Office (in Grantsburg)

715-483-9494 St. Croix Falls Church

Church Email: centralumc2016@gmail.com,

Pastor Jenny Lee: JENNLEE1732@GMAIL.COM

Website: www.upperstcroixparish.org

Facebook: Upper St. Croix Parish United Methodist Churches

August 2021



Pastor Jenny Lee, Ph.D.



“Have You Ever Ridden a Bike?”

Now to him who is able to do immeasurably more than all we ask or imagine, according to his power that is at work within us, to him be glory in the church and in Christ Jesus through all generations, for ever and ever! Amen. (Ephesians 3:20-21)

About a month ago, when I stopped by a moving sale, I saw a bicycle for sale. As soon as I saw the bike, I wanted to ride it. I tried to ride the bike around the yard, and that brought me back to my childhood. When I was about ten years old, my mother taught me to ride a bike. Even though my mother held the bike behind me, I fell off the bike several times. It took me a long time to ride a bike by myself. I hurt my knees several times. I cried to my mother to help me out, even though she was busy with work. Finally, when I was able to ride a bike by myself, I felt great, as if I could fly in the sky. I enjoyed riding my bike as a teenager. After my teens, I never had the chance to ride a bike. However, my body remembered how when I tried again. It's such a mystery to me that my body still remembered how to balance the bike even though I haven't ridden a bike for more than thirty years. How amazing!

Recently, I was enjoying riding my bike around my neighborhood. I rode far from my home, and I was about to turn around and head back toward my place. I was riding down a slight hill excitedly, with a wind in my hair feeling like I was flying in the sky. Suddenly, however, I felt something was wrong with my bike and I should stop. I looked at my bike to see what was wrong. I found that one of the pedals was out. I stood my bike up and tried to fix it. But I couldn't make it work. Therefore, I had to walk back to my place with the bike. It must have looked funny to the people who saw me walking with a bike wearing a hamlet. Sure enough, just as expected, from her house, a woman looked at me and asked, “Are you alright?” I laughed and said, “Did you feel that something was wrong with me?” She said, “I'm just wondering why you are walking with a bike and not riding it.” I stopped and showed her the condition of my bike. She said, “I think my husband can help you.” She called her husband, and he fixed my bike. Thankfully, I got help from them and could go back home riding the bike. If you know how to ride a bike, you might say, “It is easy, like riding a bike.” But, riding a bike is sometimes a challenge for people who can't ride it or don't know how.

Two weeks ago, I went to Verona to attend the Institution of Congregational Development (ICD). I learned a strategy to revitalize the church from a speaker (Jim Ozier) at the ICD. He compared revitalizing a church to riding a bike. He asked us, “Have you ever been riding a bike?” It was interesting to me because I have recently had that experience. He said, “If you know how to ride a bike, at some point in your life, you learned a skill and overcame a fear at the same time. That's what it takes to master the art of hospitality!” According to him, creating a “culture of hospitality” in a church might be a challenge and a risk, but we should overcome the risk to vitalize the church. He said, “For many mainline churches, there is an uneasy sense that we are pedaling as fast as we can but are still riding uphill, against the wind all the time. It doesn't have to be this way. What makes a bicycle go is the combination of balance and momentum. You can apply this metaphor to the life of your local church to go farther and faster than you ever imagined.”

According to him, riding a bike is easy, but scientists tell us that it is much more complex than we realize. He said, “according to scientific study, riding a bike is incredibly hard.” He recalled how we learned to ride a bike back in our childhood: ‘When we learned it at first, how bad we would be hurt, or how embarrassed we would be if we messed up. But we got through it. We overcame all fear, challenges, embarrassment, and risk without realizing how complicated riding a bike is scientifically, and we can enjoy it now. As such, we can consider hospitality in our churches. Changing or creating a new culture in the church might be a risk or challenge to long-term members. However, we must be willing to take the risk and fully commit to reap the reward. Once a church gets the knack of hospitality, it becomes hardwired into its life, and amazing things happen.

FROM THE PASTOR CONTINUED...

Creating “a culture of hospitality” is the first step to vitalizing our church. The speaker suggested five keys to create “a culture of hospitality” comparing it to riding a bike: intentionality (bike’s frame), relationship (wheels), interaction (handlebars), engagement (seat), and connection (pedals). As riding a bike is a matter of gaining balance and momentum, creating a culture of hospitality is so as well. Suppose we want to be vitalized in our church. In that case, we should work together with commitment to our church community intentionally, building good relationships with one another, engaging each other, and connecting to God and the church community. When you open your mind (engagement) and commit to the church community (connection), God will make things happen. As Ephesians says, “God is able to do immeasurably more than all we ask or imagine, according to his power that is at work within us.” (Ephesians 3:20)



(RIDING MY BIKE)

I hope you should know you are not a customer who is buying something from the church, but a producer who makes good things to sell [in Jesus Christ]. Please commit to the church to produce good things in Jesus Christ. There are several ways to vitalize our church as you get involved in the church intentionally: such as being a part of worship service by volunteering as a liturgist, reader, lighting candles, usher, song leader, a choir member, or being a part of the volunteer worker who cleaning the church, prepare for coffee fellowship, lock/unlock the church doors, or being a part of one of the church programs like the UMW, UMM, small group gatherings, being a committee member, or joining in a prayer group. Whatever you can do, please do so as a part of the producers of our church with a missionary mind, as God sent you to our church. Let us work together with all our hearts, all our minds, and all our souls. Jesus says, “Everything is possible for him who believes” (Mark 9:23), and the Apostle Paul says, “I can do everything through him [Jesus Christ] who gives me strength” (Philippians 4:13). Yes, we can do it together. Amen!



(WITH JIM OZIER, A SPEAKER AT ICD)

Blessings, Pastor Jenny



Amazon Smile—Support us when you shop anytime!

AmazonSmile is a website operated by Amazon with the same products, prices, and shopping features as Amazon.com. The difference is that when you shop on AmazonSmile, the AmazonSmile Foundation will donate 0.5% of the purchase price of eligible products to the Upper St. Croix Parish.

The money we receive will be used to support our parish’s next generation. Thank you to those who are using the link below when shopping through Amazon. Please feel free to share this link with anyone you know who shops through Amazon. You receive the same products at the same price yet you can make a big difference in supporting our youth!

Copy and past the address below (or click on the link if you’re seeing it electronically) into your browser and then bookmark the page for future use. Once you log into your account you can bookmark that and it will save your information if you make that selection! Thank you for your support!



<https://smile.amazon.com/ch/23-7429002>

GRANTSBURG: CENTRAL NEWS

AUGUST

Central UMC is holding church services at 8:30 am on Sundays.

Most all of us are vaccinated, but we respect everyone whether masks are on or off. As we are still living with the Coronavirus we are encouraging people to avoid hugging or shaking hands with each other.

We welcome everyone to join us for Coffee Fellowship after service each Sunday. Please be safe.



Peter Branstad	8/3
Jodi Elmgren	8/4
Lucy Anderson	8/5
Corey Smestad	8/7
Charles Wright	8/15
Valetta Walton	8/20
Adeline Dauer	8/22
Art Bistram	8/30
Landon Smestad	8/30

A GLANCE AT CENTRAL'S OFFERING INCOME THROUGH JUNE 2021



Funds	June 2021	Year-to-Date 2021
General Funds Gifts	\$ 2,940.00	\$ 21,420.00
Loose Offering	\$ 40.00	\$ 132.00
Upper Room	\$ -	\$ 10.00
Rummage Sale	\$ 421.50	\$ 506.50
Easter Offering		\$ 90.00
Total General Funds	\$ 3,401.50	\$ 22,158.50
Missions	\$ 30.00	\$ 50.00
Specials	\$ 50.00	\$ 285.00
Other		\$ -
All Funds	\$ 3,481.50	\$ 22,493.50



**Life is Fragile
Handle with Prayer**

GRANTSBURG: MISSIONS & MEETINGS & MISC.



UMW Ladies met at the church July 21st to celebrate all of our birthdays complete with cake and ice cream, games, and gifts. A fun time was had by all.

Our next meeting will be held on August 18th at Mary's cabin. Plans are to meet at church at 1:00 and car pool to the cabin for lunch, fun in the sun and a pontoon boat ride. Reminders will be sent on Monday August 16. If you have questions call Mary 715-791-8010.



Admin Meeting

August 17th
6:30 pm
Central UMC

BURNETTE COUNTY CALENDAR OF EVENTS

For more information go to
Events - Burnett County, Wisconsin
(burnettcountyfun.com)

8/5 THURSDAY BICYCLE & LUNCH
8/5 SIREN OPEN AIR THURSDAY W/ MARKET AND MUSIC IN THE PARK
8/6 SQUIRRELS MEAT RAFFLE AT HUMMERS RENDEZVOUS
8/7 MOBILE COFFEE CABIN AT THE OUTPOST
8/12 SIREN OPEN AIR THURSDAY W/ MARKET AND MUSIC IN THE PARK
8/12 FORTS FOLLE AVOINE MEAT RAFFLE
8/13 SQUIRRELS MEAT RAFFLE AT HUMMERS RENDEZVOUS
8/13-8/15 WEBSTER AREA FAMILY/COMMUNITY FESTIVAL
8/14 MOBILE COFFEE CABIN AT THE OUTPOST
8/19 THURSDAY BICYCLE & LUNCH
8/19 SIREN OPEN AIR THURSDAY W/ MARKET AND MUSIC IN THE PARK
8/20 SQUIRRELS MEAT RAFFLE AT HUMMERS RENDEZVOUS
8/21 MOBILE COFFEE CABIN AT THE OUTPOST
8/26 SIREN OPEN AIR THURSDAY W/ MARKET AND MUSIC IN THE PARK
8/26-8/29 BURNETT COUNTY FAIR AT GRANTSBURG FAIR GROUNDS
8/27 SQUIRRELS MEAT RAFFLE AT HUMMERS RENDEZVOUS
8/28 MOBILE COFFEE CABIN AT THE OUTPOST



August 14th Meeting

8:00 am at Central UMC

The United Methodist Men will meet the 2nd Saturday of every month at 8:00 am.
No masks are required.

AUGUST MISSION SCHOOL SUPPLIES

Again this month Central will be collecting school supplies that will be distributed to school children in Grantsburg. Please see the mission board for a list of requested supplies. Thank you ~ Deb



ATLAS NEWS



ADMINISTRATIVE COUNCIL MEETING

August 20th
10:30 am at Atlas UMC



In-person (indoor) worship services
Sundays at 9:45 am.

We will be needing volunteers so please check the sign up sheets if you are able to help.
Thank you!

LOAVES & FISHES NEEDS OUR ONGOING SUPPORT

You are invited to bring food for the Loaves & Fishes Food Pantry in Luck . As we are not currently holding indoor services, please drop your food shelf donations off in person at the food shelf.

August Collection: School Supplies



INCOME TOWARD ATLAS' BUDGET

Offerings:

June	\$ 1305.00
Other	\$ <u>Unavailable</u>
Total	\$1305.00 as of 7/18/21



Thank you for your faithful financial support of the ministry of Atlas church!

\$3278.84 - Needed per Month to cover expenses. **\$1973.84** shortage for July.

PLANET GREEN INK JET RECYCLING PROGRAM

Do you have used ink jet cartridges or old cell phones? Every one that you donate to the church provides extra money to fund Atlas Church's Ministry and outreach. Thank you for your continued support of this program!

Monica & Russel
Mattson
8/2

Roxane & Van Brock
8/22

Happy
Anniversary

Celebrate
AUGUST
BIRTHDAYS!

Reed Olson 8/1

Edna Newman 8/12

Rachel Tooze 8/27



&



lazy days
 SPLISH SPLASH SPOOSH
 rays of sunshine
 ice cream & popsticks
 giggles & smiles
 burgers • hot dogs • corn on the cob
 twinkling stars
 camp fires & s'mores
SUMMER

ATLAS UNITED METHODIST CHURCH

THRIFT SALE



Saturday, August 7th, 2021

9:00am-1:00pm



Downtown Atlas

2110 - 295th Avenue County Road B



\$1 per Bag begins at Noon



Household items, clothes and much more!

Most items FREE WILL OFFERING

LOAVES & FISHES FOOD PANTRY

Monthly Report ~ June 2021

Households Served 28
 Adults 48
 Children 3
 Total People 53

Luck School District 13
 Unity School District 15
 Other 0
 New Families: Unity 0 Luck 0 Other 0

USDA Food Received 1128#
 Groceries Purchased 0#

NON-USDA (Donations) 510#
 Volunteer Hours 44

Items Needed: Peanut butter, tuna fish, canned corn, canned peas and canned green beans.





HELPING HANDS

Volunteers for the month of August

Liturgist
Money Counter
Usher
Fellowship
Flowers
Communion

Kathy Gionis
Peter Gionis
Karen Sciacca
Admin Council
Silk Arrangements
Using Communion Packets

In-person services will be held Sunday's at 11:15 am.
We hope to see you there!

We will still also hold ZOOM Video services at 8:30 am
every Sunday. Check out our website and Facebook page
for details. We hope you can join us! Thank you!

August POLK COUNTY CALENDAR OF EVENTS FOR AUGUST

Date	Community	Description
1-31	Amery	Art Exhibition@ ArtZ Gallery 715-268-8600
1	St. Croix Falls	Polk County Fair- Polk County Fairgrounds, Rides, Exhibits, Animals and Much More
3	Clayton	Community National Night Out
3	Luck	Music in the Park @ Triangle Park 6:30pm
3	Turtle Lake	National Night Out @ Village Park
6	St. Croix Falls	Music on the Overlook 5:30pm
7	Amery	Half Marathon/5k (online registration)
7	St. Croix Falls	Farmer's Market every Saturday 10-1pm every Saturday
7-8	Osceola	Osceola Train Rides. Weekends through October. www.trainride.org
8	Turtle Lake	Vintage Cars & Crafts in the Park @ Village Park
10	Luck	Music in Triangle Park 6:30pm
13	St. Croix Falls	Music on the Overlook 5:30pm
14	Frederic	Frederic Festival @ Soo Line Park. Arts & Crafts, Pottery, Woodworking. 9am-5pm
14	Luck	Fire Department Corn Feed, Also Burgers, Brats, Hotdogs, and beverages
14	St. Croix Falls	Wine & Cheese Festival @ Dancing Dragonfly Winery 715-483-WINE
14-15	Lewis	Charles E. Lewis Days- Parade, Arts & Crafts and much more
14-15	Milltown	Fishermen's Party Main Street Milltown
20	St Croix Falls	Music on the Overlook 5:30pm
20	Amery	Music on the River, Cruise in Car Show, Food Vendors @ 5pm @ Michael Park
21	Cushing	Fun Day & Adult Soap Box Derby
21-22	Turtle Lake	Moon Lake Threshing Bee
27	St Croix Falls	Music on the Overlook @5:30pm
28	St. Croix Falls	Ribfest @ Polk County Fairgrounds 11am – 7pm, featuring Chris Kroeze

ST. CROIX FALLS NEWS

REMEMBER THE FOOD SHELF

On Communion Sundays, you are invited to bring in donations for the SCF Food Pantry... just be sure your food items have not expired.



COMMUNION SUNDAY: 8/1/21



St. Croix Falls
Admin Council Meeting

August 19th
4:00 pm via Zoom



AUGUST MISSION

Sailor Hat
Offering will go to support:

Interfaith
Caregivers

Thank you for
your support!



Missions Update: \$700 was donated to Bolivia for motorcycles to be used in remote areas. Thank you for your generosity!

"Consider the Lilies"



Relationship is the essence of creation. We live as created and Creator, as well as sibling, partner, and members of the interdependent life we are given. God has created in such a way that everyone's faithfulness is needed to live well. We live each day trusting each person will keep to one lane on the road. We are a 'love your neighbor' religion. More deeply, Jesus also asked us to consider the lilies.

Let us reflect for a moment on our relationship with creation. According to the July second issue of The Week, 72% of the west is under severe drought conditions as it is reckoned according to the U.S. Drought Monitor, and more than 25% is in an 'exceptional' drought, the most extreme category. The current drought is on track to become the worst in at least 1200 years according to Kathleen Johnson of University of California: Irvine. For many, wildfire is now a climate condition and not a season. According to the Wisconsin Department of Natural Resources, the entire Badger state is impacted by global climate change. Communities of color, tribal nations, and low-income communities feel the impact physically and economically when we experience deaths due to extreme heat and flooding events impact drinking water. Toxic waste is often left behind in our cities. A spiritual and physical staple to Native Americans in Wisconsin, wild rice is an early indicator of climate change. Wild rice is vulnerable to a range of climate impacts, from changes in water levels to increases in temperature. Climate change may move the plant's habitat farther north, which threatens a way of life for many tribal nations in Wisconsin. These conditions and many more cry out for climate justice.

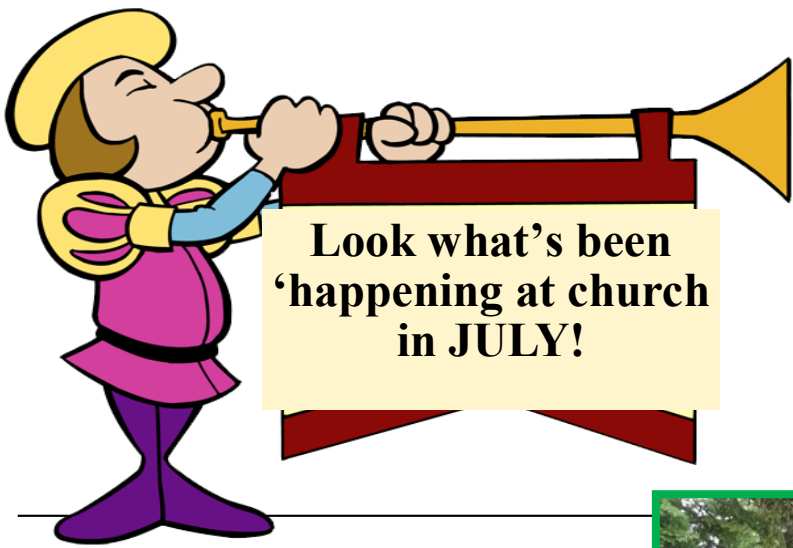
While some may deny the human impact on climate change, our faith calls us to respect the nest that God has given us and our neighbor. When Genesis 1:26 says, 'let them have dominion over...' that word we render, 'dominion' in the Hebrew means, 'responsible care.' It is the care of shepherding the whole for the purposes of the shepherd. In Philippians 2:5-11, Paul reminds the church that, 'he emptied himself.' God's self-emptying in Jesus Christ is the way of God's living in the world for the redemptive and salvific good of creation. If we join God where God is, we live in ways that empty our consumption patterns of waste. We empty our lives of greed, and we consider living with the earth in ways that more functionally love our neighbors. God's self-giving in Jesus the Christ does not worry about running out of self-giving compassion but trusts that self-giving love is enough for the healing of the universe.

It sometimes costs more to change the light fixtures in the church or make cooling and heating systems more energy efficient. Once the windows are installed, we have made a long-standing decision about efficiency. Perhaps the pandemic taught us that we can be nimble about ministry and rely less on buildings. Might we make these considerations more easily if the earth were in our prayers? Climate justice is another way of increasing racial justice and radical inclusion. John Wesley called us to personal and social holiness. What might happen to our social holiness if we regularly and prayerfully considered the lilies? What might be our witness if the church's self-giving cared for the planet and its people more than the church's preservation? Let's consider our carbon footprint and planetary health as an opportunity to witness to our reliance on Jesus the Christ who's self-giving makes us whole. Thank you for your ministry in the world God loves.

Gratefully,

Bishop Hee-Soo Jung





Coffee fellowship, Central-Grantsburg, June 27.



July 4th's fashion,
(Maxine Hauble Atlas, July 4th)



Last Drive-in Service at Atlas Park, June 27.

United Methodist
Men's meeting,
July 10 (From left:
Tom Fedje, Charles
Wright, Don
Anderson, Dave
Huff, and Art
Bistram)



Pastor Jenny Lee's Training on Institution of Congregational
Development (Verona, July 5-7, 2021)



Nathan Murtaugh's Graduation Party, (Left: Kate Murtaugh,
and right: Pastor Jenny Lee, July 10)



Sue Ott, (Atlas, July 25, 2021)

Visitation

MINISTRY



Dorothy Miller, (Atlas, July 25, 2021)



Charlie and Joan Ziegler with Karen Sciacca and Pastor Jenny Lee (St. Croix Falls, July 15)



Naomi McLean with Karen Sciacca (St. Croix falls, July 15, 2021)

AUGUST FUN PAGE

Summer Word Search

S F L I P F L O P S I S L E P
S U N S C R E E N A N U O S I
A U N G U E S T H D O N V W C
B N E G J O C E A N F S S I N
A P O O L J U R Y S U H O M I
R U G U S A T A E U N I H S C
B M G C R E S A M A S N I U S
E E N U F O N S U M M E R I P
C M A A S T O H E T H I N T R
U V A C A T I O N S R H L A I
E R O B I L K R X J O I O U N
I I N S E F I T S F U N P T K
C A R E L A X S U L Y L O L L
E J U N E A C F A M I L Y S E
I C E P O P A H O T S R E L R



AUGUST
BARBECUE
BEACH
FAMILY
FLIP FLOPS
FUN
HOT
ICE CREAM

ICE POP
JULY
JUNE
OCEAN
PICNIC
POOL
RELAX
SHORTS

SPRINKLER
SUMMER
SUNGLASSES
SUNSCREEN
SUNSHINE
SWIMSUIT
VACATION



ZOOM VIDEO WORSHIP SERVICES

8:30 am Sunday's

There will be a parish-wide ZOOM video service at 8:30 am every Sunday until further notice. The worship materials will be mailed out to those without email, emailed out to everyone in the parish we have email addresses for and posted on our website. The sermon and ZOOM login information will also be sent with the service material and posted on our website. The video of the worship service will be posted on the parish Facebook page after the service.

MISCELLANEOUS

MINISTRY TABLETS AVAILABLE

Just a reminder we have ministry tablets available for all churches to use for their members, please let Pastor Jenny know if you would like to use one.

Our experiences are that users really appreciate them, they are able to hear and see other members during the service. -Karen Sciacca



Youth & Children's Ministry Directors Wanted

The Upper St. Croix Parish United Methodist Church is looking for two high energy, fun spirited directors to join our team. Must have a Christian sense of call to compassionate service, a love for working with youth and children, passion for faith development, excellent communication skills, creativity, and the ability to work effectively with others. Both positions will be part-time: Youth Director position is about 5 hours per week, and the Children's Director position is about 7 hours per week. Duties include coordinating programs, leading activities, and monthly meetings with volunteers and the pastor. Pay based on experience.

Please email resume with cover letter to jennlee1732@gmail.com.

Contact: Pastor Jenny Lee

Address: 301 S. Pine St., Grantsburg, WI 54840

Website: www.upperstcroixparish.org



NEW UPPER ST. CROIX PARISH

Worship **SCHEDULE**

The SPRC Committee met on June 24th to discuss in person worship services at each of the 3 churches in the Upper St. Croix Parish. It was decided that the schedule would be as follows:

8:30 am Central UMC in Grantsburg

9:45 am Atlas UMC in Atlas

11:15 am St. Croix Falls UMC in St Croix Falls

It was agreed not to rotate times in order to provide consistency. If the Pastor is running behind schedule the Liturgist at the church can begin the announcements and the service.

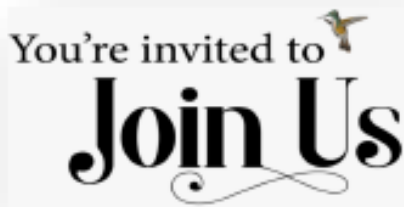
A quarterly all parish service (Joint service) will also start again on Aug 29th.

We will again need volunteers for each service. Please see the sign-up sheets at each church and sign up if you are able to help. We love our volunteers!!

We look forward to opening the doors again at all the churches and welcoming all who come.



Introduction of Two Small Group Gatherings



We will be starting two new small group gatherings. The purpose of these gatherings is to help us build good relationships with God and with one another. This will help revitalize our faith and our church community. In addition, we will evolve in our faith as disciples of Jesus Christ, and contribute to our local community and the global world.

We will begin with two small groups, and later on, we hope to add additional groups. We will meet (gather) regularly (once a week or twice a month). Each group has a leader and an assistant leader (or secretary). Each leader and assistant has the responsibility to communicate with members, and prepare for each gathering. They will also work with Pastor Jenny. These two groups are open to everyone, and they welcome all! We will open our church to the community for these gatherings and plan to start the first week of August 2021.

1. Prayer Group (Breakthrough Prayer)

"This kind can come out only through prayer." (Mark 9:29)

It is an intercessory prayer group for the people, church, community, county and the world. The prayer group will learn about many styles of prayer, and will practice some of them. The prayer group will keep record and report as witnesses of the power of prayer.



2. Craft Group

"A certain woman named Lydia, a worshiper of God, was listening to us; she was from the city of Thyatira and a dealer in purple cloth. The Lord opened her heart to listen eagerly to what was said by Paul." (Acts 16:14)

This group will meet and craft together. Some of the potential projects are crocheting, knitting, handmade crafting, drawing, etc. We welcome everyone from beginners to those who are open to teaching others. The goal of the craft group is to get to build relationships with our church family and neighbors in the community, and to also contribute to a local community through fundraising and mission work.



If you are interested in either of these groups, please contact Pastor Jenny.
(Main Office: 715-463-2624, Cell: 773-793-7307, or Email: jennlee1732@gmail.com).

We look forward to gathering-God always shows up, we hope you do too.

Polk County Food Shelves

Amery

Amery Food Shelf—230 Deronda Street, Amery

Food Shelf is located in the old Amery Regional Medical Center Building.

Call (715) 268- 5999 before 12:00 noon on Wednesday. Leave name and number on voice mail. Open Thursday 2-6 pm.

Area of service: Amery school district only

The Congregational Church—201 Harriman Ave. North, Amery

Food distribution: 9-10:30 am every 2nd Saturday of the month . Registration is 7 am to 9:30 am. **715-268-7390 Special note:** No economic restrictions; however, a \$20.00 donation is asked to help cover the cost of the truck.

Ruby's Pantry —www.amery.ucc.org or office.ameryucc@gmail.com

Area of service: County wide

Dresser

People Loving People --- 103 E. Main Street, Dresser

Monday and Saturday 11 am – 1 pm Wednesday 2 pm – 5 pm

Phone: 715-501-4657

Frederic

Family Pathways Food Shelf—1100 Wisconsin Ave South, Frederic

Phone **715-327-4425**

Open Tuesday 9 am—6 pm, Thursday 9 am—6 pm, Saturday 9 am—12pm

For best service please call for appointment.

Luck

Loaves and Fishes Interfaith Food Pantry—300 North 1st Street, Luck

Pantry is located in the back of the DBS Hall

Open Tuesday & Thursday 11 am—1 pm

Phone **(715) 472-2003**

Area of service: Luck & Unity School Districts

Osceola

The Open Cupboard Food Shelf—402 2nd Avenue, Osceola

Call for appointment: **715-294-4357**

Open Monday-Friday 8 am – 5 pm

(The Open Cupboard also has used furniture & clothing)

Area of service: Osceola & Dresser school district

St. Croix Falls

St Croix Falls Food Shelf—809 Pine Street, St Croix Falls

Phone: **715-520-2397**

Open Monday 9 am—11 am Wednesday 3 pm—6 pm Friday 9 am – 10 am

Area of service: SCF school district, Dresser elementary, Centuria, Cushing & portions of Balsam Lake & Taylors Falls

Family Pathways Food Shelf—2000 US Hwy 8, St Croix Falls

Phone: **715-483-2920**

Open Monday 9–5 pm, Tuesday 9-5 pm, Wednesday 12 pm– 6 pm, Thursday 9-5 pm, Friday 9–5 pm, & Saturday 9-Noon



YOU give them something to eat. Mt 14:16



Burnett County Emergency Food Shelves and Distributions

Grantsburg Area Food Shelf *No cost*

Serving residents of the Grantsburg School District
Open Thursday 9:30am-11:30am;
EMERGENCIES ONLY on Tuesday 9:30am-11:30am
Allowed to come 2 times a month
Located between the Library and the Village Hall Office,
320 South Brad St., Grantsburg, WI



Indianhead Community Action Agency- "Connections" *No cost*

Serving all Burnett County residents
Open 10am-3pm Monday, Tuesday & Friday
Located in Webster next to the Holiday Gas Station
(715) 866-8151

Ruby`s Food Shelf- Siren *No cost*

Serving residents of the Siren & Webster School Districts
Open 10:00am-2pm Monday & Friday
10:00am-4pm Wednesday
Closed Thursday

****You`re asked to be there at least 30 minutes before close**
Located at 24534 State Hwy 35/70 (Ruby`s Secondhand)
(715)349-RUBY (7829)



Ruby`s Monthly Food Distributions *Bring own boxes or baskets Donation: \$20*

For dates, times, and locations (no location restrictions at this time), visit <http://www.rubyspantry.org/distribution/distschedule.htm>

Second Harvest Food Distribution *No cost*

First and Third Thursday of every month
Starts at 11:00am until food is gone
Located at Connections in Webster
(next to the Holiday Gas Station)
This distribution is offered to anyone in need of food; please help get the word out

St. Croix Chippewa Commodities Distribution

24663 Angeline Ave., Webster
349-2195, Becky Reynolds
Food distribution: Monday to Thursday 7:30am-4:30pm
(Native American Income Eligible Only)
Closed first week of each month for inventory. Can only receive one time per month. A variety of items are available each month and may include canned meats; juice; canned foods; dry goods; frozen meats; cheese; rice and pasta; fresh produce.

