

Upper St. Croix Parish
Grantsburg, St. Croix Falls, Atlas
P.O. Box 128
Grantsburg, WI 54840

Hello Fall...



*When we put
GOD FIRST,
all other things
fall into their
proper place.*



UNITED METHODIST MESSENGER

THE UPPER ST. CROIX PARISH

715-463-2624 Parish Office (in Grantsburg)

715-483-9494 St. Croix Falls Church

Church Email: centralumc2016@gmail.com,

Pastor Jenny Lee: JENNLEE1732@GMAIL.COM

Website: www.upperstcroixparish.org

Facebook: Upper St. Croix Parish United Methodist Churches

October 2019



Pastor Jenny Lee, Ph.D.



Let Us go TOGETHER!

“Come to me, all you that are weary and are carrying heavy burdens, and I will give you rest. Take my yoke upon you, and learn from me; for I am gentle and humble in heart, and you will find rest for your souls. For my yoke is easy, and my burden is light” (Matthew 11:29-30).

Do you know what a yoke is? According to a dictionary, a yoke is “a wooden crosspiece that is fastened over the necks of two animals, and that attached to the plow or the cart that they are to pull.” I have seen the yoke in Korea in my childhood. I grew up in farmland, and I could see oxen with the yoke that were cultivating farms or that were carrying heavy burdens. The Yoke is shown below in these pictures.



Pictures from Google pic.1(left) <https://theidolbabblers.com/2015/07/25/yoke-and-purpose/>
Pic2(middle) <https://homesteadontherange.com/2017/01/31/ox-yokes-and-collars-withers-yokes-and-ox-collars/>
pic. 3(right)(<http://www.lewis-clark.org/article/3105>)

In the picture of the right side, you may see two big holes. The two big holes are for necks of a pair oxen (or a pair of the other animals). As we see the yoke in these pictures, a pair of oxen carry a yoke. Therefore, if two oxen are under the same yoke, they cannot move independently. If one of them does not make sincere to work, the other would feel a more of a heavy burden. However, in contrast, if one does sincerely to work, the other feels easier to work.

In the tradition of Israel, when people chose one pair of oxen for a yoke, they decided that one of them is weaker; the other is stronger. When they make the oxen carry burdens, they give the stronger ox the heavy burden and provide the weaker ox a smaller charge, which is lighter. The reason they do it this way, which is not equal, is that it makes the stronger ox work sincere. That means, the weaker does not work just by walking with the stronger. What's interesting is that if one makes the stronger work alone, the stronger would not work or not to carry burdens because they feel awkward to carry duties alone. Therefore, even though the weaker would not work or carry a smaller load walking beside the stronger, the stronger works hard and carries the heavy burdens easily.

Through the Gospel of Matthew 11:29-30, the Lord invites us to take the yoke together. The Lord says, “come to me, all you that are weary and are carrying heavy burdens, and I will give you rest.” We have burdens in life such as taking care of family, handling our living, working hard every day, concerning health cares, and so on . We also have burdens of sins, which we cannot be saved from by ourselves. Sometimes, we would share our responsibilities with our families or with friends. However, sometimes our families or our friends would share their burdens more with us. That's life, which we have to live with in this world.

What about social burdens? Poverty, racism, sexual harassment, economic classism, immigrant issues, and even natural disasters. We watch the news every day. Through the report, we know global disasters, poverty, lack of water, so on, and so on. Do you think we could find any solution for the social burdens by ourselves? The Lord, who knows us very well with our duties of life in the world, invites us. he says, “Take my yoke upon you.” You may know, the yoke of the Lord is not for the Lord, but that is ours. Our Savior, the Lord, who knows our weakness, would work for us as did the stronger oxen because our Lord is “gentle and humble in heart.” If we learn “gentle and humble” from the Lord, we will find rest for our souls.

Continued on next page...

FROM THE PASTOR CONTINUED....

To be under the yoke of Jesus, we should be gentle and humble as was he. “Gentleness” is one of the fruits of the Holy Spirit. The Greek, *praotes* means gentle, mild, meek, and to be an inwrought grace of the soul. Gentleness is not weakness. The truly meek person is one whose life has been empowered by the Holy Spirit, which comes from faith that has been energized by the Words of God. The word, “gentle” has been used for wild horses which are trained to behave in a particular acceptable manner. The wild horses could not be handled at all by people. They are active and energetic in the wild. After they are trained, they become meek enough so that a child could ride them. However, they do not lose their power to run, to carry a rider, or to work cattle. The gentle horses submit to their owners, but they are still fierce and wild for others.

“Gentleness” and “meekness” are not down putting of ones self with an affected, false sense of humility; rather, it is a robust, free, confident kind of characteristic. “Gentleness” is very desirable and compassionate inner mind. Gentleness is, first of all, our attitude toward God and not people. The person who has been “gentled” by God is in the image of God in meekness. She/he is also the person who is directed by God. “Meekness” tends to be emotional. It deals with how we feel within, while outwardly, we may be acting gently. Meekness has mostly to do with our spirit within. In other words, for the character of gentleness, the inner mind is still fierce, desirable, compassionate, wild, and durable. However, the style brings out gentle acts while respecting and admiring others. That's why it is one of the fruits of the Holy Spirit.

We know some of the gentle and humble figures in the Scriptures. In Number, “the man Moses was very humble, more so than anyone else on the face of the earth” (Number 12:3). Moses challenged his leadership by his siblings, Aaron and Miriam because he married the Cushite woman. However, Moses was not angry with them. How could Moses get this kind of recognition as being gentle and meek? He could be gentle and humble for God because he has walked with God at the wilderness for 40 years.

As you know, Moses killed a person in Egypt because he could not control his anger by himself, and he escaped from Egypt. When he became a shepherd in Midian wilderness, he met God in the burning bush. After that, he walked with God throughout the desert. That Moses became gentle and humble towards God is only by the grace of God.

Let us walk with our Lord, Jesus Christ. Jesus promises to carry our burdens so that we can rest. Jesus took our heavy loads out already through the Cross. We need to walk beside Jesus as a pair of oxen walk together. When we are under the yoke of Jesus, we can be rest because Jesus carries the heavy yoke for us.

We learned that when a pair of oxen carry a yoke, most of the heavy parts are put on the taller and stronger ox while the shorter and weaker ox follows the track-they walk together. That's how Jesus carries most of the weight on his shoulder, and we follow him. Living life under the same yoke with Jesus is to live life with Jesus walking tightly together. We can rest only by being together with those who are meek. We can take a rest from our burdens by being together with those who are humble.

Who is humble and meek? Jesus says, “I am gentle and humble in heart.” You will enjoy the excellent rest when you follow Jesus, who is gentle and humble. The rest is not about getting rid of the problems. It is about having a feeling of peace while we are in the storm. It is like the scripture says, “when you pass through the waters, I will be with you; and through the rivers, they shall not overwhelm you; when you walk through fire you shall not be burned, and the flame shall not consume you (Isaiah 43:2).” God does not say; I will remove your burdens in your life. Instead, God says, “I will be with you.” Jesus gives us all the peace that endures forever and that overcomes all the burdens of life. That's the grace of God.

How God loves us! John Wesley says in his famous sermon, "Free Grace,"
“How freely does God love the world! While we were yet sinners, Christ died for the ungodly. While we were dead in sin, God spared not his own Son but delivered Him up for us all.

Moreover, how freely with him does he give us all things! Verily, free grace is all in all! (John Wesley, “Free Grace”)


That's the amazing grace of God! In our life, sometimes we feel a burden too much, and we feel lonely. However, remember that God never leaves us alone. Let us go together to the Lord with our neighbors who are weaker as our Lord walks with us gently and humbly!




Blessings! Pastor Jenny

A STEWARDSHIP MESSAGE


The Virtue of Giving ~ October 2019




35 "In all this I have given you an example that by such work we must support the weak, remembering the words of the Lord Jesus, for he himself said, 'It is more blessed to give than to receive.'" (Acts 20:35)




I recently came across a quotation by David Starr Jordan, founding President of Stanford University: "Wisdom is knowing what to do next; Skill is knowing how to do it, and Virtue is doing it." It caused me to think about how this applies to generosity.



Knowing That I Should Give: God calls us all to worship God and support the church. Stewardship is faithful management of all God gives us so that God can use our gifts to transform us spiritually and extend Christ's transforming love to others. We are told in Scripture that "God loves a cheerful giver" and that "It is more blessed to give than to receive."



Knowing How to Determine What I Should Give: Scripture informs us to love God and love others. Thus, we should divide our giving between the two. The amount to give to God through the church is the tithe, ten percent of our income. In order to reach the tithe, we should prayerfully consider what proportion of income to give, then strive to increase toward the goal of tithing, usually by about one percent of income per year. Although some of our tithe will go to the needy, we should consider another proportion of income to give to those in need.



The Virtue of Giving: The real issue is not whether we give 10%, but what we will do with the entire 100%. John Wesley believed in the spiritual discipline summed up as "earn all you can, save all you can, give all you can." Wesley believed that after earning money honestly and spending only what we need on our families and ourselves, we should give the rest away. Surely, using this approach, he would anticipate that our giving would be much more than the tithe of ten percent. His was.



Jim Wells, Wisconsin United Methodist Foundation



Visit the Wisconsin United Methodist Foundation at
www.wumf.org or Facebook/wumf.org
Or call 1-888-903-9863



Strength In Our Roots

*The trees of the Lord are watered abundantly,
the cedars of Lebanon that he planted. Psalm 104:16*

I have been reflecting on the imagery from scripture concerning trees, especially the “cedars of Lebanon,” mentioned so often in scripture. The mighty cedars were planted by God. They represent the sound, the solid, the enduring –in essence the very will of God. Repeatedly, the historians and prophets point to the destruction of the cedars of Lebanon as the sign of disobedience, disrespect, and disregard for God’s creation and covenant.



I find the metaphor of trees in a forest compelling, especially the redwood tree. Redwoods grow to amazing heights, though they do not lay down deep roots. Instead, the root system stretches wide, and the roots intertwine and fuse together with other redwoods. One 350-foot redwood has roots stretching 100 feet from the trunk, creating an interconnected network of roots that gives strength and stability to the entire forest. This interdependence is an excellent image of what our strong United Methodist Church system should be. As each tree grows, it strengthens the system; what affects one part of the system, affects the whole. Very similar to the Paul’s image of the Body of Christ in I Corinthians 12 – where one member suffers, all suffer; where one is honored, all benefit.

Equally important is the integrity of the system, rather than the value of the parts. It is impossible to uproot one tree without devastating other parts of the system. The interconnection goes so deep and stretches so wide that to do damage to one part causes massive destruction to the whole body. When I hear people talking about “amicable separation,” and “gracious exit” from The United Methodist Church, the imagery of the redwood root system always comes to mind.



I do not believe there is a path to separation that will not cause irreparable harm, both to the members and to the system. Those individual parts who want what they want, no matter the cost cannot achieve their ends without doing deep harm to the system. If indeed our mission is to make disciples of Jesus Christ for the transformation of the world, we can do this so much more effectively with the system intact rather than in tatters.

SOUL FOOD CONTINUED ON NEXT PAGE...

SOUL FOOD CONTINUED...

I understand the depth of passion, commitment, emotion, and even the wide range of interpretations of scripture and theological perspective. We are not of one heart, mind, or spirit on many things. Yet we are call connected. We share a common baptism. We share a common covenant. We are, all of us, recipients of God's grace, forgiveness, and love. We are reconciled beyond our own individual weaknesses into the body of Christ; not by our own doing, but by God's. Our roots are intertwined. Our roots are fused. We can no more go our separate ways with no harm or damage than we can uproot a single redwood. "We are one in the Spirit, we are one in the Lord," is a beloved refrain from "They Will Know We Are Christians By Our Love," and this is more that fanciful poetry. We are all fed, nurtured, cultivated, and cared for by God. We are the product of God's will, God's vision, and God's purpose. We are the cedars of Lebanon that God planted, and it would be nothing less than sin to see our mighty forest torn apart, burned, and destroyed.

My constant prayer is a prayer for unity. My ongoing desire is that we embrace fully the General Rules; doing no harm, committing ourselves to doing all the good possible, and attending cooperatively and compassionately with the many uniting and unifying ordinances/practices of God that open us constantly to the means of grace. There are things that bend us, but I pray they might not break us. There are things that threaten us, but I pray they don't destroy us. And there are things that cause disagreement, but I pray they do not ultimately separate us from each other and from the will of God. Let us pray faithfully and fervently together: God, thy will be done, in us and through us. Amen.

Grace and Peace,

Bishop Hee-Soo Jung



Amazon Smile

AmazonSmile is a website operated by Amazon with the same products, prices, and shopping features as Amazon.com. The difference is that when you shop on AmazonSmile, the AmazonSmile Foundation will donate 0.5% of the purchase price of eligible products to the Upper St. Croix Parish.

The money we receive will be used to support our parish's next generation. Thank you to those who are using the link below when shopping through Amazon. Please feel free to share this link with anyone you know who shops through Amazon. You receive the same products at the same price yet you can make a big difference in supporting our youth!



Copy and past the address below (or click on the link if you're seeing it electronically) into your browser and then bookmark the page for future use. Once you log into your account you can bookmark that and it will save your information if you make that selection! Thank you for your support!

<https://smile.amazon.com/ch/23-7429002>

GRANTSBURG: CENTRAL NEWS

Liturgists

Oct. 6 _____
 Oct. 13 _____
 Oct. 20 _____
 Oct. 27 _____

Ushers

Oct. 6 _____
 Oct. 13 Valetta Walton
 Oct. 20 _____
 Oct. 27 _____

Church Doors on Sundays

Open Bob Branstad
 Close Russ & Deb Hammer (Except 10/6)

Sunday School

(Older/Middle/Kindergarten)

Oct. 6 _____ / _____ / _____
 Oct. 13 Kim Wheeler/ _____ / _____
 Oct. 20 Steve Briggs/ _____ / _____
 Oct. 27 LuAnne Martell/ _____ / _____

Coffee Fellowship

Oct. 6 Laura Harmon
 Oct. 13 _____
 Oct. 20 Paulie Kratchmer
 Oct. 27 _____

Altar Flowers

Oct. 6 Art & Pauline Bistram
 Oct. 13 Barb Loomis
 Oct. 20 _____
 Oct. 27 _____

Acolytes

Oct. 6 _____
 Oct. 13 _____
 Oct. 20 _____
 Oct. 27 _____

Mowing/Shoveling

9/29 & 10/6 _____
 10/13 & 10/20 _____
 10/27 & 11/3 _____

Oct. Counter _____



ACOLYTES



BIRTHDAYS & ANNIVERSARIES



Rod & Janet Dahl 10/4
 Art & Pauline Bistram 10/5
 Norma Kratchmer 10/11
 Lily Benge Briggs 10/12
 Melissa Dahl 10/12
 Barb Loomis 10/13
 Abby Goepfert 10/14
 Scott & Sue Bunting 10/14
 Amy Harmon 10/15
 Shirley Baker 10/24
 Tim Reisewitz 10/24
 Bob Popham 10/26
 Destany Neuman 10/30



A GLANCE AT CENTRAL'S OFFERING INCOME THROUGH AUGUST 2019



Funds	August 2019	Year-to_Date 2019
General Funds Gifts	\$ 4,997.50	\$ 46,534.12
Loose Offering	\$ 65.50	\$ 1,026.46
Upper Room	\$ -	\$ 7.00
Sunday School		
Pie & Ice Cream Social	\$ 490.11	\$ 490.11
Total General Funds	\$ 5,553.11	\$ 48,057.69
Equipment Replacement		
Fund	\$ -	\$ 588.00
Capital	\$ -	\$ 340.00
Missions	\$ -	\$ 1,748.00
Specials	\$ -	\$ 434.00
Other-Pastors Youth Fund	\$ 25.00	\$ 1,979.00
A/C Fund	\$ -	\$ 20.00
UMM	\$ -	\$ 145.00
Undesignated Memorials	\$ -	\$ 2,760.00
All Funds	\$ 5,578.11	\$ 56,071.69



GRANTSBURG: MISSIONS & MEETINGS

OCTOBER MISSION

The children will be collecting coins on Sunday's in October and on Halloween to help support Trick or Treat for UNICEF. The power of Kids helping Kids is far reaching and powerful. Please bring in change or bills to support this good cause.



OCT. MEETING
Oct. 15th ~ 6:30 pm
Grantsburg UMC



UNITED METHODIST MEN'S OCTOBER MEETING

Saturday, October 12th

UMW UPDATE....



Our next meeting will be at the home of Kayleen Branstad on October 9th at 1:00 pm. Linda Hokanson will bring treats. We have a number of important topics to discuss but will do our best to keep the meeting short. All are welcome.

Keep the date of Saturday, November 30th (Saturday after Thanksgiving) open for our annual Christmas Heritage Boutique. This is our main fundraiser for the year and we would appreciate donations of baked goods, crafts and slightly used Christmas decorations.



HARVEST SUPPER

Grantsburg UMC
Friday, October 11th
4:00-7:00 pm

MENU: Bone-In Ham with Raisin Sauce, Scalloped Potatoes, Squash, Green Beans, Applesauce, Coleslaw, variety of Pickles & Breads, Apple & Pumpkin Desserts, Hot Coffee & Milk!

Adults: \$10
Age 6-12: \$5
5 & under: Free

ATLAS NEWS

Liturgists

Oct. 6 _____
 Oct. 13 Roxane Brock
 Oct. 20 _____
 Oct. 27 _____

Ushers

Oct. 6 _____
 Oct. 13 _____
 Oct. 20 _____
 Oct. 27 Roxane Brock



Coffee Fellowship (10:45 am)

Oct. 20 Sue Olson

Cleaning

(Note the date starts with the Sunday to be cleaned and the rest of that week is your responsibility also.)

10/6 & 10/13 _____
 10/20 & 10/27 _____



Sunday School (Older/Middle/Kindergarten)

Oct. 6 Colleen Adams-Schween/Jamie Steffen /
 Oct. 13 Mariah Gaffey/ /Josie Grimes
 Oct. 20 / /
 Oct. 27 / /



PLANET GREEN INK JET RECYCLING PROGRAM

Do you have used ink jet cartridges or old cell phones? Every one that you donate to the church provides extra money to fund Atlas Church's Ministry and outreach. Thank you for your continued support of this program!

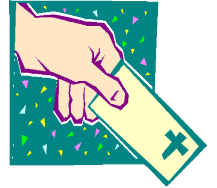
To date we have made over \$814!



INCOME TOWARD ATLAS' BUDGET

Offerings:

Sept. 1 \$ 2217.00
 Sept. 8 \$ 620.00
 Sept. 15 \$ 271.00
 Sept. 22 \$ 3165.00
 Sept. 29 \$ Unavailable



Total \$6273.00 (as of 9/22)

\$3278.84 - Needed per Month to cover expenses. **October overage=\$2994.16!!**

Thank you for your faithful financial support of the ministry of Atlas church!

**ADMINISTRATIVE
COUNCIL MEETING**
Tues., Oct. 21st
6:00 pm
at Atlas UMC



Van Brock 10/2
 Dawson Kunze 10/10
 Sue Olson 10/12
 Cole Steffen 10/21
 Georgeanne Koons 10/23
 Sue Ott 10/26
 Jim Mattson 10/29



Brody & Brittney Woltz
 10/9
 Josie & Pat Grimes
 10/10
 Doug & Deb Kunze
 10/10



&



LOAVES & FISHES NEEDS OUR ONGOING SUPPORT

- On Communion Sunday, October 6th you are invited to bring food and school supplies for the Loaves & Fishes Food Pantry in Luck and supplies needed by Atlas Church. We do keep a basket out for donations brought at any time as well.



October:
HOLIDAY FOODS
(Canned yams, stuffing, cranberry sauce, instant potatoes, pumpkin, etc.)



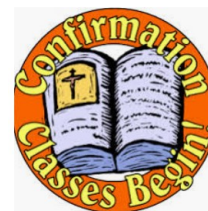
**Operation Christmas Child
Fall Kick-Off**
Sunday, Oct. 13th
5:00 pm in Siren

Last day to drop off OCC shoeboxes will be Nov. 17th. Watch the bulletin and Nov. Newsletter for additional information.



Confirmation 2019

Confirmation Parents & Confirmands Meeting at Central UMC in Grantsburg on Sunday, October 6th at 2:00 pm



Confirmation Class

Sunday, October 13th
2:00 pm
Atlas UMC

OCTOBER MISSION

Polk County Interfaith Care Givers

We will be collecting loose change during worship to support Interfaith Caregivers.



Interfaith Caregivers assists seniors and adults with disabilities to enhance independence, dignity and quality of life in Polk County, WI.

COUNTRY CHRISTMAS

"COFFEE"

CRAFT & BAKE SALE

Saturday, Dec. 7th ~ 9:00am -1:00 pm

Please help us make this year's event a success by

- ✦ Reserving the date
- ✦ Begin to think about that little fancy Christmas treats you can bake to be served with coffee upstairs.
- ✦ Begin dreaming about what you can offer to the Craft Sale downstairs or what baked goods you can provide for Bake Sale!



LOAVES & FISHES FOOD PANTRY

Monthly Report ~ August 2019

Households Served	62	Luck School District	37
Adults	110	Unity School District	25
Children	33	Other	0
Total People	143	New Families: Unity 2 Luck 2, Other 0	
USDA Food Received	1488#	NON-USDA (Donations)	331#
Groceries Purchased	405#	Volunteer Hours	71

Items Needed: Cereal, canned meat products and personal items.



ST. CROIX FALLS NEWS



REMEMBER THE FOOD SHELF

On Communion Sundays, you are invited to bring in donations for the SCF Food Pantry. Canned vegetables, fruit or meat, fruit juice, cereal, peanut butter and jelly, kid-friendly soups, personal hygiene items ... just be sure your food items have not expired. **COMMUNION SUNDAY: October 6th**



Liturgists

All of Oct. Jim Andrews

Ushers

All of Oct. Marjorie Broker

Altar Flowers

All of Oct. Karen Sciacca

Coffee Hour

Oct. 13 Jim & Fay Andrews
Oct. 20 Administrative Council
Oct. 27 Kathy & Peter Gionis

Communion / Paraments

Oct. 6 Karen Sciacca

Money Counter(s)

All of Oct. Peter Gionis

Potluck



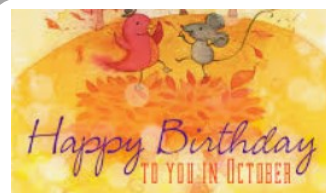
St. Croix Falls
Admin Council Meeting

October 10th

6:00 PM



POTLUCK
Thurs., Oct. 17th ~ 6:00 pm
St. Croix Falls UMC
Please join us and bring a
favorite dish to share!



Kate Murtaugh
10/26

OCTOBER MISSION



Sailor Hat Offering will go to purchase
personal hygiene products to support
the St. Croix Falls School Store.



HELPING HANDS

October Happenings



MARK YOUR CALENDARS

CHARGE
CONFERENCE

Sat., December 7th

Halloween Humor....



Joe: What do you call wood when it's scared?

Bob: I don't know.

Joe: Petrified!

Michael: What treat do eye doctors give out on Halloween?

Matthew: I don't know. What?

Michael: Candy corneas.

Brett: What do mummies like listening to on Halloween?

Brent: I don't know.

Brett: Wrap music!

Spencer: What plants like Halloween the most?

Tanner: Which ones?

Spencer: Bam-BOO!

Bill: Why did the policeman ticket the ghost on Halloween?

McKenzie: Why?

Bill: It didn't have a haunting license.

Sarah: What are a ghost's favorite rides at the fair?

Brian: Tell me.

Sarah: The scary-go-round and rollerghoster!



October 6th, 2019

Special Offering Collected

**TOGETHER, WE ENABLE
NATIONAL AND INTERNATIONAL
GRADUATE STUDENTS TO
CHANGE THE WORLD.**

Will You Equip World-Changers?

Will you give generously on World Communion Sunday to make education and vocational impact possible for more students? Will you equip gifted and qualified students from around the globe to become the world-changers God created them to be?

Nelson Mandela said, "Education is the most powerful weapon you can use to change the world." And because the people of The United Methodist Church believe that all of God's children have been created and gifted to build the kingdom Jesus ushered in, we're resourcing them to do just that. Because of your giving on World Communion Sunday, the most powerful tool to change the world is in more hands.

Special Offering envelopes will be in the bulletins on Oct. 6th and available at each church as well.

Polk County Food Shelves

Amery

Amery Food Shelf—230 Deronda Street, Amery

Food Shelf is located in the old Amery Regional Medical Center Building.
Call (715) 268- 5999 before 12:00 noon on Wednesday. Leave name and number on voice mail. Open Thursday 2-6 pm.

Area of service: Amery school district only

The Congregational Church—201 Harriman Ave. North, Amery

Food distribution: 9-10:30 am every 2nd Saturday of the month . Registration is 7 am to 9:30 am. **715-268-7390 Special note:** No economic restrictions; however, a \$20.00 donation is asked to help cover the cost of the truck.

Ruby's Pantry —www.amery.ucc.org or office.ameryucc@gmail.com

Area of service: County wide

Dresser

People Loving People --- 103 E. Main Street, Dresser

Monday and Saturday 11 am – 1 pm Wednesday 2 pm – 5 pm

Phone: 715-501-4657

Frederic

Family Pathways Food Shelf—1100 Wisconsin Ave South, Frederic

Phone **715-327-4425**

Open Tuesday 9 am—6 pm, Thursday 9 am—6 pm, Saturday 9 am—12pm

For best service please call for appointment.

Luck

Loaves and Fishes Interfaith Food Pantry—300 North 1st Street, Luck

Pantry is located in the back of the DBS Hall

Open Tuesday & Thursday 11 am—1 pm

Phone **(715) 472-2003**

Area of service: Luck & Unity School Districts

Osceola

The Open Cupboard Food Shelf—402 2nd Avenue, Osceola

Call for appointment: **715-294-4357**

Open Monday-Friday 8 am – 5 pm

(The Open Cupboard also has used furniture & clothing)

Area of service: Osceola & Dresser school district

St. Croix Falls

St Croix Falls Food Shelf—809 Pine Street, St Croix Falls

Phone: **715-520-2397**

Open Monday 9 am—11 am Wednesday 3 pm—6 pm Friday 9 am – 10 am

Area of service: SCF school district, Dresser elementary, Centuria, Cushing & portions of Balsam Lake & Taylors Falls

Family Pathways Food Shelf—2000 US Hwy 8, St Croix Falls

Phone: **715-483-2920**

Open Monday 9–5 pm, Tuesday 9-5 pm, Wednesday 12 pm– 6 pm, Thursday 9-5 pm, Friday 9–5 pm, & Saturday 9-Noon



YOU give them something to eat. Mt 14:16



Burnett County Emergency Food Shelves and Distributions

Grantsburg Area Food Shelf *No cost*

Serving residents of the Grantsburg School District
Open Thursday 9:30am-11:30am;
EMERGENCIES ONLY on Tuesday 9:30am-11:30am
Allowed to come 2 times a month
Located between the Library and the Village Hall Office,
320 South Brad St., Grantsburg, WI



Indianhead Community Action Agency- "Connections" *No cost*

Serving all Burnett County residents
Open 10am-3pm Monday, Tuesday & Friday
Located in Webster next to the Holiday Gas Station
(715) 866-8151

Ruby`s Food Shelf- Siren *No cost*

Serving residents of the Siren & Webster School Districts
Open 10:00am-2pm Monday & Friday
10:00am-4pm Wednesday
Closed Thursday

****You`re asked to be there at least 30 minutes before close**
Located at 24534 State Hwy 35/70 (Ruby`s Secondhand)
(715)349-RUBY (7829)



Ruby`s Monthly Food Distributions *Bring own boxes or baskets Donation: \$20*

For dates, times, and locations (no location restrictions at this time), visit <http://www.rubyspantry.org/distribution/distschedule.htm>

Second Harvest Food Distribution *No cost*

First and Third Thursday of every month
Starts at 11:00am until food is gone
Located at Connections in Webster
(next to the Holiday Gas Station)
This distribution is offered to anyone in need of food; please help get the word out

St. Croix Chippewa Commodities Distribution

24663 Angeline Ave., Webster
349-2195, Becky Reynolds
Food distribution: Monday to Thursday 7:30am-4:30pm
(Native American Income Eligible Only)
Closed first week of each month for inventory. Can only receive one time per month. A variety of items are available each month and may include canned meats; juice; canned foods; dry goods; frozen meats; cheese; rice and pasta; fresh produce.

