

Upper St. Croix Parish  
Grantsburg, St. Croix Falls, Atlas  
P.O. Box 128  
Grantsburg, WI 54840



## UPCOMING CHURCH EVENTS

*October 12: Central UMC Harvest Supper,  
Friday, 4-7 pm*

**October 27: Youth Group Mission  
Feed My Starving Children, Egan, MN**

*November 10: Charge Conference,  
Saturday, 10 am at Atlas UMC*

**November 24: Heritage Christmas Boutique  
Saturday, 9am-3pm at Central UMC**

*December 1: Old Fashioned Christmas Tea,  
Craft & Bake Sale, Sat., 9am-1pm at Atlas UMC*

# UNITED METHODIST MESSENGER

## THE UPPER ST. CROIX PARISH

715-463-2624 Parish Office (in Grantsburg)

715-483-9494 St. Croix Falls Church

Email: [centralumc2016@gmail.com](mailto:centralumc2016@gmail.com),

[pastor.kookho@gmail.com](mailto:pastor.kookho@gmail.com) or [pastor.ranyoo@gmail.com](mailto:pastor.ranyoo@gmail.com)

Website: [www.upperstcroixparish.org](http://www.upperstcroixparish.org)

Facebook: Upper St. Croix Parish United Methodist Churches

October 2018



The Special General Conference meeting in February of 2019, will be offered three options (The One Church Plan, The Connectional Conference Plan, The Traditional Plan) submitted by the **Commission on A Way Forward** to help direct the church in the coming years.

**Many of the bishops in the U.S. and our Wisconsin Annual Conference bishop, Hee-Soo Jung, have asked local churches in WI to support the “One Church Plan” because many of us believe and think it is the best plan among all three of them to go forward together as one body of Christ in The United Methodist Church.**

Here are short summaries of the three plans. Please, read them carefully and pray for our denomination, our 6 Wisconsin delegates (3 Clergy & 3 Lay delegates) and 2 alternates who are going to vote as representatives of the Wisconsin Annual Conference at the 2019 Special General Conference, and our local churches, which will follow up on the decision from General Conference.

### 1. The One Church Plan

Reverse the church’s historic teaching in regard to human sexuality. Remove all references to homosexuality and to marriage as between a man and a woman. **Let individuals, churches, and conferences decide for themselves what standards they wish to follow.** Build in assurances that the convictions of traditionalists will be honored.

### 2. The Connectional Conference Plan

Divide into three separate branches of United Methodism and let **each Branch adopt their own Discipline, select their own bishops, adopt their own criteria for ordination and set its own standards for human sexuality.** This option would necessitate several constitutional amendments.

### 3. The Traditional Plan

**Keep the same Discipline statements regarding human sexuality as are in the Discipline currently.** However, since bishops, conferences, boards of ministry and churches are presently in open defiance of the Discipline as it now stands, close the loopholes and tighten the accountability sections of the Discipline.

The 93 page booklet ([https://unitingmethodists.com/wp-content/uploads/2018/07/finalreport\\_commissiononwayforward.pdf](https://unitingmethodists.com/wp-content/uploads/2018/07/finalreport_commissiononwayforward.pdf)) that shows the entire decision procession of the Commission On A Way Forward is on the information desk and I put 4 links at the bottom that explain each plan in more detail.

If you have more questions about it, please feel free to contact your pastors.

1. <https://www.facebook.com/dave.nuckols.1/posts/10212202355790214>  
(Summarize and Compare with 3 Plans)
2. <https://goodnewsmag.org/2018/07/whats-in-the-one-church-plan/>  
(Explain about the One Church Plan)
3. <https://goodnewsmag.org/2018/07/whats-in-the-connectional-conference-plan/>  
(Explain about the Connectional Conference Plan)
4. <https://goodnewsmag.org/2018/07/whats-in-the-traditional-plan/>  
(Explain about the Traditional Plan)



GIVING

Living in the Kingdom of God  
October 2018

*Therefore do not worry, saying, 'What will we eat?' or 'What will we drink?' or 'What will we wear?'... But strive first for the kingdom of God and his righteousness, and all these things will be given to you as well.*  
(Matthew 6:31, 33, NRSV)

According to John the Baptist, we must "Repent, for the Kingdom of Heaven is at hand." (KJV) What does repentant Stewardship look like?

I recently (re)read *A Spirituality of Fundraising* by Henri Nouwen. He provides some answers to the question, "What will Stewardship look like in the Kingdom of God?" Here is a summary based on Nouwen's thoughts on stewardship as faithful discipleship.

**Security in God.** Do we place our trust in God or mammon? What is our relationship to money? There is money in the Kingdom; it finances building a community of love. However, there are no money worries, because in the Kingdom there is abundance rather than scarcity.

**Community of Love.** In the community of love, we care for one another and serve our neighbors. The middle class often resents the rich and fears the poor. In the Kingdom, we include all and love all alike.

**Invitation.** We invite everyone to abide in the Kingdom and participate in the building of the community of love. This means we are comfortable asking for money, because money is what the community needs to be fruitful in its missions and ministries.

**Prayer and Gratitude.** It is in prayer that our conversion begins because it re-orientes our thoughts toward money, toward others and toward our goal of the beloved community. "As our prayer deepens into constant awareness of God's goodness, the spirit of gratitude grows within us."  
(Nouwen, p. 57).

How is your Stewardship program inviting disciples into the Kingdom?

*Jim Wells, Wisconsin United Methodist Foundation*

Visit the Wisconsin United Methodist Foundation at  
[www.wumf.org](http://www.wumf.org) or [Facebook/wumf.org](https://www.facebook.com/wumf.org)  
Or call 1-888-903-9863



## BIGGER AND BETTER THINGS

*"Believe me that I am in the Father and the Father is in me; but if you do not, then believe me because of the works themselves. Very truly, I tell you, the one who believes in me will also do the works that I do and, in fact, will do greater works than these, because I am going to the Father. I will do whatever you ask in my name, so that the Father may be glorified in the Son. If in my name you ask me for anything, I will do it." (John 14:11-14)*



What will it take for the laity and clergy, congregations, and conference leadership of the Wisconsin Annual Conference to do "greater works" than Jesus? It seems preposterous on one level, but on another? It is what Jesus calls us to do — and by the power and guidance of the Holy Spirit, it is our new reality.

There is some concern in our conference that we might not be in a good place financially. To be completely honest, we have spent down our reserves and we are experiencing a "cash flow" shortage in the immediate future. But that is only part of the story. Our Conference Council on Finance and Administration, with the support of the cabinet and Connectional Table, has developed a plan to reestablish a solid financial base upon which we will continue to do our ministry. We will move through this time of budgetary correction quickly and well. Our Conference Boards and Agencies hold more than \$12 million dollars in funds invested with our Wisconsin Conference Foundation for the ongoing, long-term ministries. This is our current reality. The Wisconsin Conference is in excellent financial condition beyond the current day-to-day challenges.

This is why we are so confident that it is time to Launch Out! in faith, in new directions, to do "greater things" than we have ever done before. Launch Out! is not a way to "pay our bills," but a way to take a giant leap of faith forward to fulfill our mission of making disciples for the transformation of the world.

Wisconsin — both the state and the Conference — is experiencing a massive paradigm shift. Our population is changing. We are moving from a predominantly "white" culture to a gloriously diverse multi-cultural reality. New opportunities for new faith contexts with new people are all around us. We need to invest — today — in the communities that will lead us into our future.

We have existing congregations that are poised for high-potential, community-changing/world-changing ministries across the conference. The revisioning, revitalization, and resourcing of existing ministries to "turn around" our decline and struggle is essential. We need to invest — today — in empowering our existing churches to do transformational ministry.

The needs to serve, support, and engage individuals, families, communities, cities, and towns are greater than ever, and as social structures are able to do less and less, it is imperative that the church do more and more. Mercy and justice ministries have never been more challenging, but there has never been a greater opportunity to make a difference. We need to invest — today — in Christian service and mission that gives hope, light, and life to the most needy and vulnerable in our world.

Launch Out! is about faith-raising, not just fund-raising. Money is not the point; ministry is. We have a beautiful opportunity to make a commitment to say, collectively, that we walk by faith, not by sight. Our future will be determined by what we have, not by what we lack. What can we do together to do "greater things"? We are envisioning bigger and better things than we have ever been able to do before. We are a Conference of many gifts, many assets, many resources, and many opportunities. We are a Conference of life-giving, world-transforming faith. We are a Conference that worships God, that serves a risen Savior, and that is empowered by an incredible, awesome, and miraculous Holy Spirit. Let us rejoice in the great blessings we have been given, and let us Launch Out! together in faith.

Thanks be to God!

Bishop Hee-Soo Jung



# MISCELLANEOUS

## Amazon Smile

AmazonSmile is a website operated by Amazon with the same products, prices, and shopping features as Amazon.com. The difference is that when you shop on AmazonSmile, the AmazonSmile Foundation will donate 0.5% of the purchase price of eligible products to the Upper St. Croix Parish.

As we shared last month, between April 1st and June 30th we received \$9.35 from Amazon Smile. This money will be used to support our parish's next generation. Thank you to those who are using the link below when shopping through Amazon. Please feel free to share this link with anyone you know who shops through Amazon. You receive the same products at the same price yet you can make a big difference in supporting our youth!



Copy and past the address below (or click on the link if you're seeing it electronically) into your browser and then bookmark the page for future use. Once you log into your account you can bookmark that and it will save your information if you make that selection! Thank you for your support!

<https://smile.amazon.com/ch/23-7429002>

## Stewardship 2019

*By Mike Giles*

Every fall during our annual Stewardship Campaign we look forward to the next year and how we can continue to provide for our church family at Central. Stewardship can take on a number of forms; joining together Sunday morning to worship and praise the Lord, participating on committees to provide guidance for the church, stepping up to lead worship, assuming a leadership role in church activities, reaching out in ministry to the community and pledging financial support.

We don't necessarily know what the next year will hold but in faith and commitment we go forward prepared to meet new challenges. In 2018 we had changes in the Parish from four churches and two full time Pastors, to three churches and one and one-half time Pastors. This reduced our Parish financial costs for the last half of 2018. Our proposed budget for 2019 will show a reduction of Parish costs of 3.19%. Central's apportionment for 2019 will be at 100%, we received a 50% reduction last year. That reduction will not be available to us in 2019. The overall budget including shared and non-shared expenses will be 1.58% higher than last year. We will need to remain flexible and committed to working together in supporting Central's mission.

Through the first 9 months of 2018 we have been able to meet our operational expenses for Central's ministry, building costs and our shared expenses for the parish office and pastoral support. Operational funds coming into the Church have been about \$6000 less than we have spent. We have relied on designated monies to maintain a positive check book balance. We expect that support will remain strong through the remainder of this year and hope to finish the year within our budget.

As we launch the Stewardship Campaign in October, please consider how you participate in the life of the church with Central's mission to "Be a light for Christ to the world".





**TOGETHER, WE ENABLE NATIONAL AND INTERNATIONAL GRADUATE STUDENTS TO CHANGE THE WORLD.**

Around the globe, countless gifted and qualified people face financial obstacles that hinder them from preparing for the vocation God has given them, especially youth and young adults. For ethnic students who will be the first generation in their families to attend college, or for those people of color who haven't historically had access to resources that make higher education possible, the road toward education has often been unwieldy.

What would it look like if the church today imitated Jesus' affirmation of the full dignity and God-given potential of all women and men—especially those who've historically been assigned to the world's margins? On World Communion Sunday your giving helps to provide scholarships for national and international graduate students whom God has gifted to learn and to serve.

**Equipping Disciples Like Mary Grace to Serve in Jesus' Name**

As a small child Mary Grace Galapon labored as a housemaid in exchange for food and clothing. Yet, allowed to attend church, she found hope. As a member of The United Methodist Church, your giving on World Communion Sunday has allowed this deaconess, of the Mindanao Philippines Annual Conference, to pursue an education that is now changing her community as she works to eliminate poverty.

Mary Grace's work, and the impact of hundreds more like her, are possible because you give.

**Will You Equip World-Changers?**

Will you give generously on World Communion Sunday to make education and vocational impact possible for more students, like Mary Grace? Will you equip gifted and qualified students from around the globe to become the world-changers God created them to be?

*Nelson Mandela said, "Education is the most powerful weapon you can use to change the world." And because the people of The United Methodist Church believe that all of God's children have been created and gifted to build the kingdom Jesus ushered in, we're resourcing them to do just that. Because of your giving on World Communion Sunday, the most powerful tool to change the world is in more hands.*

**ANNUAL HARVEST SUPPER**

**Grantsburg UMC ~ Friday, October 12th**  
**4:00-7:00 pm**

MENU: Bone-In Ham with Raisin Sauce,  
Scalloped Potatoes, Squash, Green Beans,  
Applesauce, Coleslaw, Variety of Pickles &  
Breads, Apple & Pumpkin Desserts,  
Hot Coffee & Milk

**Adults: \$10.00**  
**Age 6-12: \$5.00**  
**5 & under: Free**



Happy Fall

---

**Happy Fall Y'all**

Wishing You and Yours a Wonderful Fall Season!



# GRANTSBURG: CENTRAL NEWS



**Liturgists**  
 Oct. 7 John Elmgren  
 Oct. 14 Janet Dahl  
 Oct. 21 \_\_\_\_\_  
 Oct. 28 Carol Drohman

**Coffee Fellowship**  
 Oct. 7 Dave & Sharon Huff  
 Oct. 14 Kayleen Branstad  
 Oct. 21 Valetta Walton  
 Oct. 28 Pauline Kratchmer

**Ushers**  
 Oct. 7 Floyd & Carol Drohman  
 Oct. 14 Valetta Walton  
 Oct. 21 Charles Wright  
 Oct. 28 \_\_\_\_\_

**Altar Flowers**  
 Oct. 7 Dave & Sharon Huff  
 Oct. 14 Barbara Loomis  
 Oct. 21 Valetta Walton  
 Oct. 28 \_\_\_\_\_

**Church Doors on Sundays**  
 Open \_\_\_\_\_  
 Close \_\_\_\_\_  
 Oct. 7 \_\_\_\_\_  
 Oct. 14 \_\_\_\_\_  
 Oct. 21 \_\_\_\_\_  
 Oct. 28 \_\_\_\_\_

**Acolytes**  
 \_\_\_\_\_  
 \_\_\_\_\_  
 \_\_\_\_\_  
 \_\_\_\_\_

**Mowing/Snow Removal**  
 9/30 & 10/7 Brad Rehbein

**Oct. Counter** Steve Briggs  
**Oct. Potluck** LuAnne Martell & Carol Drohman

**Sunday School**  
 Oct. 7 Brad Rehbein  
 Oct. 14 Laura Harmon  
 Oct. 21 \_\_\_\_\_  
 Oct. 28 \_\_\_\_\_



ACOLYTES



BIRTHDAYS & ANNIVERSARIES



**Rod & Janet Dahl 10/4**  
**Art & Pauline Bistram 10/5**  
 Norma Kratchmer 10/11  
 Lily Bengé Briggs 10/12  
 Melissa Dahl 10/12  
 Barb Loomis 10/13  
 Abby Goepfert 10/14  
**Scott & Sue Bunting 10/14**  
 Amy Harmon 10/15  
 Shirley Baker 10/24  
 Tim Reisewitz 10/24  
 Bob Popham 10/26  
 Destany Neuman 10/30

## A GLANCE AT CENTRAL'S OFFERING INCOME THROUGH AUGUST 2018



Funds	August 2018	Year-to_Date 2018
<b>General Funds Gifts</b>	\$ 5,542.50	\$ 44,835.36
<b>Loose Offering</b>	\$ 195.00	\$ 1,473.03
<b>Upper Room</b>	\$ -	\$ 14.00
<b>Sunday School</b>	\$ -	\$ 100.00
<b>Pie &amp; Ice Cream Social</b>	\$ 448.00	\$ 448.00
<b>Other</b>	\$ -	\$ 175.00
<b>Total General Funds</b>	\$ 6,185.50	\$ 47,045.39
<b>Equipment Replacement Fund</b>	\$ 84.00	\$ 2,011.82
<b>Capital</b>	\$ 50.00	\$ 400.00
<b>Missions</b>	\$ -	\$ 1,350.00
<b>Specials</b>	\$ -	\$ 462.00
<b>A/C Fund</b>	\$ -	\$ 100.00
<b>Other-Pastors Youth Fund</b>	\$ 25.00	\$ 550.00
<b>Central's Youth Fund</b>	\$ -	\$ 85.00
<b>Undesignated Memorials</b>	\$ -	\$ 32,627.45
<b>UMM</b>	\$ 100.00	\$ 518.00
<b>All Funds</b>	\$ 6,444.50	\$ 85,149.66



# GRANTSBURG: MISSIONS & MEETINGS

## UNITED METHODIST MEN

### OCTOBER MEETING

Saturday, October 13th  
8:00 AM  
Central UMC

**Devotions**-Charles Wright  
**Refreshments**-John Elmgren

## ADMINISTRATIVE COUNCIL MEETING

### OCT. MEETING

Oct. 23rd ~ 6:30 pm  
Grantsburg UMC

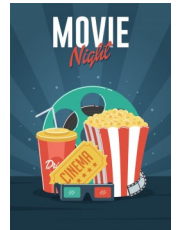
## OCTOBER MISSION

The children will be collecting coins on Sunday's in October and on Halloween to help support Trick-or-Treat for UNICEF. The power of Kids helping Kids is far reaching and powerful.



On October 3rd we will once again have "movie night" following Central's potluck supper. Potluck will start at 6pm and the movie will start at

7pm. The movie "Amish Grace" will be shown. This movie brings up many very relevant issues in today's society including Amish beliefs, school shootings, the perpetrator's frame of mind, the struggles of those left behind, and forgiveness. We will have a short discussion after the movie. Light refreshments will be served.



On October 10th we will have our next general meeting starting at 1pm in the Central's fellowship hall. Agenda items include the December Christmas Luncheon, College Mailing assignments, the Heritage Christmas Sale, the upcoming Legacy Celebration in March of 2019, and setting a date for our 2019 planning meeting. We have lots of important decisions to make and the need for lots of enthusiastic help to make things happen. Hope to see many of you there and bring a friend!

**T**rick-or-Treat for UNICEF is a great way to not only have fun during Halloween, but

to save lives. **Know the five dos to make this Halloween especially spook-tacular!**



**1 DO explain where donations will go.** How will they actually help kids around the world?

**2 DO share the history of Trick-or-Treat for UNICEF.**

How did the campaign start? Tell the story!

**3 DO describe the impact of the campaign.** How much has

been raised? Share the hair-raising successes!

**4 DO emphasize that no donation is too small.**

Every cent contributes to a boo-tiful cause!

**5 DO have a fang-tastic time.** Being scary-good has never been so fun! ●

### Solve This!

★ If 52 neighbors donated \$2 each, what could that donation be used for? See how many different combinations you can come up with.

★ If a group of 18 students collects just enough to buy two School-in-a-Boxes, what is the average amount of money each student collected?

### What Your Donations Can Buy:

**\$8** A UNICEF kit to give 1 family clean water to drink.

**\$15** A box of 5 mosquito nets to protect kids from deadly malaria.

**\$55** 1 box of therapeutic food (150 packets) to save a malnourished child.

**\$210** A School-in-a-Box to help 40 refugee kids learn and heal.





# ATLAS NEWS



Oct. 7  
Oct. 14  
Oct. 21  
Oct. 28

## Liturgists

Toni Koons  
Wendell Hauble  
Roxane Brock

Oct. 7  
Oct. 14  
Oct. 21  
Oct. 28

## Ushers

Don Schween  
Colleen Norenberg

Oct. 21

Kristie Olson

## Cleaning

*(Note the date starts with the Sunday to be cleaned and the rest of that week is your responsibility also.)*

10/7 & 10/14 \_\_\_\_\_  
10/21 & 10/28 \_\_\_\_\_

## Sunday School

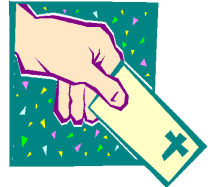
*(Older/Middle/Primary)*

Oct. 7 \_\_\_\_\_ / \_\_\_\_\_ / Cheryl Olson  
Oct. 14 Jamie Steffen/ Kristie Olson/Mariah Gaffey  
Oct. 21 Colleen Adams-Schween/ \_\_\_\_\_ / \_\_\_\_\_  
Oct. 28 Mariah Gaffey/Jamie Steffen/ \_\_\_\_\_

## INCOME TOWARD ATLAS' BUDGET

### Offerings:

Sept. 2	\$ 810.00
Sept. 9	\$ 315.00
Sept. 16	\$ 2358.00
Sept. 23	\$ 1243.90
Sept. 30	\$ <u>Unavailable</u>



Total \$ 4726.9 (as of 9/23)

\$3278.84 - Needed per Month to cover expenses. **Sept. overage=\$1448.06**

*Thank you for your faithful financial support of the ministry of Atlas church!*

## Church Council



## ADMINISTRATIVE COUNCIL MEETING

Sunday, Oct. 21  
12:00 pm at Atlas UMC



Van Brock 10/2  
Dawson Kunze 10/10  
Sue Olson 10/12  
Cole Steffen 10/21  
Georgeanne Koons 10/23  
Sue Ott 10/26  
Jim Mattson 10/29



Brody & Brittney Woltz  
10/9  
Josie & Pat Grimes  
10/10  
Doug & Deb Kunze  
10/10



**PLANET GREEN  
INK JET  
RECYCLING  
PROGRAM**

Do you have used ink jet cartridges or old cell phones? Every one that you donate to the church provides extra money to fund Atlas Church's Ministry and outreach. Thank you for your continued support of this program!

# Oct



&



## Fears Into Feats

Kids around the world are turning their fears into feats through UNICEF's work. Kids Helping Kids® makes this possible!

Trick-or-Treat for UNICEF began 68 years ago as a way to help kids still affected by World War II.

Since then, millions of children across the United States have gone door to door on Halloween with UNICEF collection boxes, calling out, "Trick-or-Treat for UNICEF!"

The annual tradition of Kids Helping Kids® — involving donations big and small — has helped to raise nearly \$177 million since 1950.

## OCTOBER MISSION Trick-or-Treat for UNICEF

**IT'S ALMOST TIME TO  
TRICK-OR-TREAT  
FOR UNICEF**

Can we count on you to help those in need? Our children will collect change on Sunday's in October and on Halloween to support this cause.

### Every Dollar Makes an Impact:

**\$1** Can buy pencils for a class of 30 students.

**\$8** Gives a UNICEF kit that provides clean water to a family.

**\$15** Sends a box of 5 mosquito nets to protect kids from deadly malaria.

**\$55** Gives a box of 150 food packets to save a malnourished child.

**\$210** Buys a School-in-a-Box to help 40 refugee kids learn and heal.

## COUNTRY CHRISTMAS "TEA"

### Craft & Bake Sale

Sat. Dec. 1st ~ 9am-1pm



- ✦ Reserve the date
- ✦ Begin thinking about what little fancy Christmas treats you can bake for the "tea" upstairs
- ✦ Begin dreaming about what you can offer to the craft fair downstairs or what baked goods you can provide for the Bake Sale

## LOAVES & FISHES NEEDS OUR ONGOING SUPPORT

On Communion Sunday, October 7th you are invited to bring food and school supplies for the Loaves & Fishes Food Pantry in Luck and supplies needed by Atlas Church. We do keep a basket out for donations brought at any time as well.



**October:  
HOLIDAY FOODS**  
(canned yams, stuffing, cranberry sauce, instant potatoes, pumpkin, etc.)

## LOAVES & FISHES FOOD PANTRY

### Monthly Report ~ August 2018

Households Served	65	Luck School District	34
Adults	97	Unity School District	31
Children	27	Other	0
Total People	124	New Families: Unity 2 Luck 0, Other 0	
USDA Food Received	755#	NON-USDA (Donations)	859#
Groceries Purchased	640#	Volunteer Hours	70.0



**Items Needed:** Cereal canned meats ( 8 grams of protein or higher), Juice and peanut butter.

# ST. CROIX FALLS NEWS



HELPING HANDS  
BRINGING

## Liturgists

All of Oct. Sharon Asp

## Ushers

All of Oct. Marjorie Broker

## Altar Flowers

All of Oct. Peter & Kathy Gionis

## Coffee Hour

Oct. 14 Steve & LeAnn Sylvester  
Oct. 21 Administrative Council  
Oct. 28 Terra Broxen Ricke

## Communion / Paraments

Oct. 7 Peter & Kathy Gionis

## Money Counter(s)

All of Oct. Peter Gionis

## Potluck

Marjorie Broker



## REMEMBER THE FOOD SHELF

On Communion Sundays, you are invited to bring in donations for the SCF Food Pantry. Canned vegetables, fruit or meat, fruit juice, cereal, peanut butter and jelly, kid-friendly soups, personal hygiene items ... just be sure your food items have not expired. **COMMUNION SUNDAY: October 7**



## ST. CROIX FALLS FOOD SHELF UPDATE

We are seeing an increase in clients to the food shelf. I am happy to announce that all is going well. Donations are coming in and we are able to supply those in need. Thank you to everyone for your continued contributions, volunteerism and support.

*Sharon Asp, Director*



## HALLOWEEN HUMOR

Who won the skeleton beauty contest? *No body*  
What do skeletons say before they begin dining?  
*Bone appetit!*

Where do baby ghosts go during the day? *Dayscare centers*

Who did Frankenstein take to the prom? *His ghoulish friend*

What's a monster's favorite play? *Romeo and Ghouliet*

What do witches put on their hair? *Scare spray*

What do you get when you cross Bambi with a ghost? *Bamboo*



OCTOBER BIRTHDAYS

Kate Murtaugh  
10/26

# What's happening



**Parish Youth Group Mission**  
**2:00-4:00 pm**  
**Feed My Starving Children in Eagan, MN**

**GO FISH FUN NIGHT**

Wednesday,  
 October 24th  
 5:00-6:30 pm  
 Central UMC

**CHARGE CONFERENCE**  
 Saturday, November 10th  
 10:00 am  
 Atlas UMC



12 Tips  
 to Help You  
 Pack Your  
 Operation  
 Christmas Child  
 Shoeboxes!

1. If possible use one of the OCC shoe boxes that you can pick up at church so that they pack easier for shipping.
2. Include something fun.
3. School supplies are awesome!
4. Include personal hygiene products -NO TOOTHPASTE
5. Dinnerware is special-many children don't have their own bowl, cup or utensils
6. Hair items are useful
7. NO BATTERIES
8. NO CANDY
9. NO LIQUIDS
10. DO NOT SEND MILITARY THEMED ITEMS
11. Toys that need instructions should not be sent

The Upper St. Croix Parish will be collecting shoeboxes for children in need in over 160 countries The deadline to drop off shoe boxes at church is November 1st. Information will be sent out weekly in the bulletins.

Thank you for spreading Christmas Cheer to those who may not receive it otherwise.

**KIDS FUN SUNDAY**

Atlas UMC  
 Sunday, October 28th  
 12:00 pm

**\*SUNDAY FUN DAY\***

**All children are welcome!**

A 10 year old little girl was asked by another classmate, "what is it like to be a Christian?". The girl replied, "it's like being a pumpkin. God picks you from the patch, brings you in, and washes all the dirt off of you. Then he cuts open the top and scoops out all of the yucky stuff. He removes the seeds of doubt, hate, greed, etc., and then He carves you a new smiling face and puts His light inside of you to shine for all the world to see."

# Polk County Food Shelves

## Amery

**Amery Food Shelf—230 Deronda Street, Amery**

Food Shelf is located in the old Amery Regional Medical Center Building.  
**Call (715) 268- 5999 before 12:00 noon on Wednesday. Leave name and number on voice mail. Open Thursday 2-6 pm.**

Area of service: Amery school district only

**The Congregational Church—201 Harriman Ave. North, Amery**

Food distribution: 9-10:30 am every 2nd Saturday of the month . Registration is 7 am to 9:30 am. **715-268-7390 Special note:** No economic restrictions; however, a \$20.00 donation is asked to help cover the cost of the truck.

**Ruby's Pantry –www.amery.ucc.org or office.ameryucc@gmail.com**

Area of service: County wide

## Dresser

**People Loving People --- 103 E. Main Street, Dresser**

Monday and Saturday 11 am – 1 pm Wednesday 2 pm – 5 pm

Phone: 715-501-4657

## Frederic

**Family Pathways Food Shelf—1100 Wisconsin Ave South, Frederic**

Phone **715-327-4425**

Open Tuesday 9 am—6 pm, Thursday 9 am—6 pm, Saturday 9 am—12pm

**For best service please call for appointment.**

## Luck

**Loaves and Fishes Interfaith Food Pantry—300 North 1st Street, Luck**

Pantry is located in the back of the DBS Hall

Open Tuesday & Thursday 11 am—1 pm

Phone **(715) 472-2003**

Area of service: Luck & Unity School Districts

## Osceola

**The Open Cupboard Food Shelf—402 2nd Avenue, Osceola**

Call for appointment: **715-294-4357**

Open Monday-Friday 8 am – 5 pm

(The Open Cupboard also has used furniture & clothing)

Area of service: Osceola & Dresser school district

## St. Croix Falls

**St Croix Falls Food Shelf—809 Pine Street, St Croix Falls**

Phone: **715-483-9138**

Open Monday 9 am—11 am Wednesday 3 pm—6 pm Friday 9 am – 10 am

Area of service: SCF school district, Dresser elementary, Centuria, Cushing & portions of Balsam Lake & Taylors Falls

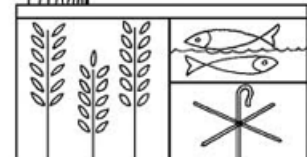
**Family Pathways Food Shelf—2000 US Hwy 8, St Croix Falls**

Phone: **715-483-2920**

Open Monday 9–5 pm, Tuesday 9-5 pm, Wednesday 12 pm– 6 pm, Thursday 9-5 pm, Friday 9–5 pm, & Saturday 9-Noon



**YOU give them something to eat. Mt 14:16**



# Burnett County Emergency Food Shelves and Distributions

## Grantsburg Area Food Shelf *No cost*

Serving residents of the Grantsburg School District  
Open Thursday 9:30am-11:30am;  
**EMERGENCIES ONLY** on Tuesday 9:30am-11:30am  
Allowed to come 2 times a month  
Located between the Library and the Village Hall Office,  
320 South Brad St., Grantsburg, WI



## Indianhead Community Action Agency- "Connections" *No cost*

Serving all Burnett County residents  
Open 10am-3pm Monday, Tuesday & Friday  
Located in Webster next to the Holiday Gas Station  
(715) 866-8151

## Ruby`s Food Shelf- Siren *No cost*

Serving residents of the Siren & Webster School Districts  
Open 10:00am-2pm Monday & Friday  
10:00am-4pm Wednesday  
Closed Thursday

\*\*You`re asked to be there at least 30 minutes before close  
Located at 24534 State Hwy 35/70 (Ruby`s Secondhand)  
(715)349-RUBY (7829)



## Ruby`s Monthly Food Distributions *Bring own boxes or baskets Donation: \$20*

For dates, times, and locations (no location restrictions at this time), visit <http://www.rubyspantry.org/distribution/distschedule.htm>

## Second Harvest Food Distribution *No cost*

First and Third Thursday of every month  
Starts at 11:00am until food is gone  
Located at Connections in Webster  
(next to the Holiday Gas Station)  
This distribution is offered to anyone in need of food; please help get the word out

## St. Croix Chippewa Commodities Distribution

24663 Angeline Ave., Webster  
349-2195, Becky Reynolds  
Food distribution: Monday to Thursday 7:30am-4:30pm  
(Native American Income Eligible Only)

Closed first week of each month for inventory. Can only receive one time per month. A variety of items are available each month and may include canned meats; juice; canned foods; dry goods; frozen meats; cheese; rice and pasta; fresh produce.

*"If you love me, feed my sheep."*

John 21:15-19